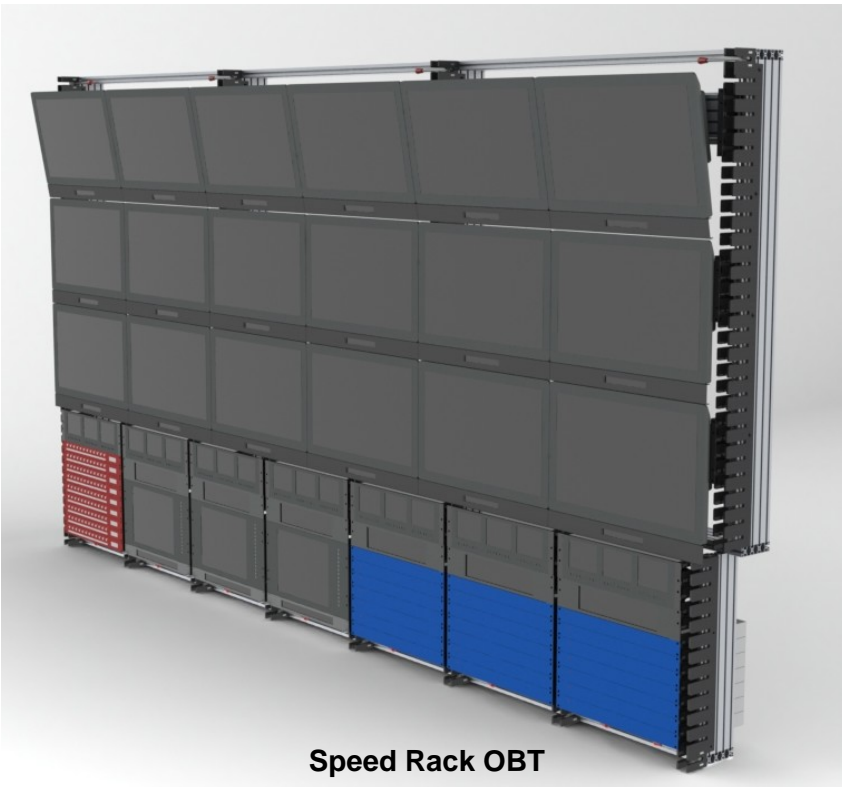




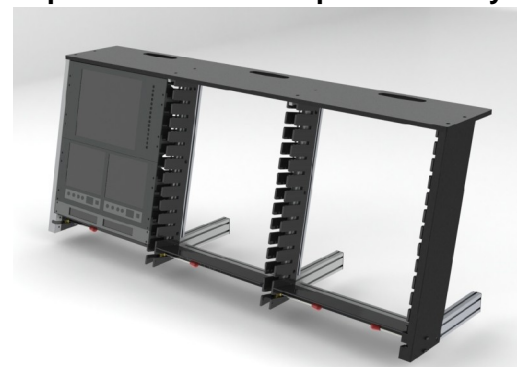
Speed Rack Standard



Speed Rack OB



Speed Rack Desk Top 2 and 3 Bay



About Speed Rack

Speed Rack has been in development for the last 12 months and is a culmination of Mode-AL's experience with multiple monitor mounting systems (Monitor Stack's and Media Wall's) and input from some of the world's leading Outside Broadcast specialists.

Speed Rack enables all 19" rack mount equipment to be quickly and easily adapted, using the existing 19" rack mount fixing points, to fit the Speed Rack system, and all non 19" rack mount screens, clocks, PC's, speakers etc to be mounted on to the same system.

Speed Rack provides the perfect hybrid system for Outside Broadcasting; enabling quick on-site erection, easy reconfiguration and quick dismantling after production.

Speed Rack comes in three distinct varieties:

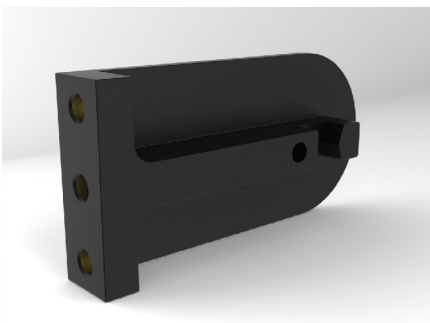
Speed Rack Standard: For use in Outside Broadcast when a facility has to be built on site. With its 42u standard structure and infinite linear expansion, the perfect MCR or Gallery can be built quickly and logically in a matter of hours not days

Speed Rack OB Truck: This variant has been designed with the OB vehicle in mind. It is a ridged custom built frame for insertion into any OB vehicle. This variant is custom designed and built to your specification.

Speed Rack Desk Top: As standard a 1, 2 or 3 bay 12u desk top mount (other U heights and widths can be specially ordered)

How the Speed Rack system works

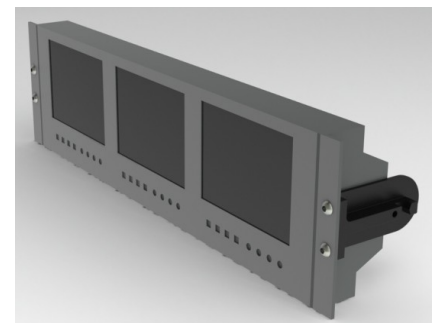
The Speed Rack Adaptor is the key to the versatility of the system. When the project began, the key targets to be met were the easy conversion of existing 19" rack equipment and the quick assembly and disassembly of the system. The Speed Rack Adaptor allows us to do this with all equipment, not just 19" racking. The development of this universal adaptor is the key to this system. Manufactured from Grivory (the same material as car door handles) this tough injection moulded plastic adaptor is low cost and very durable, giving many years of service and not being a significant cost consideration when moving over to the speed rack from traditional mounting systems.



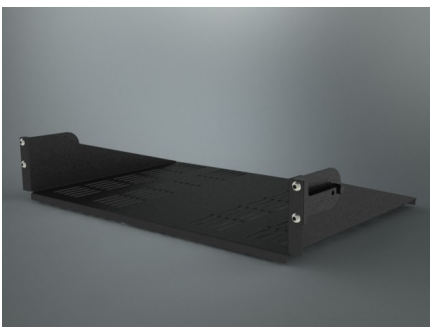
Speed Rack Adaptor



Speed Rack Adaptor on a 46" screen



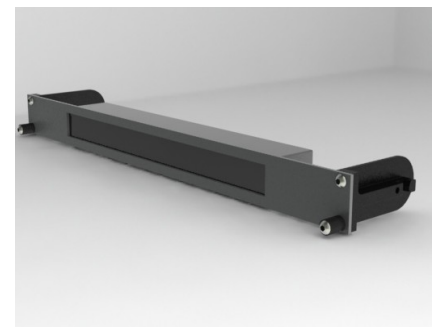
Speed Rack Adaptor with a triple 7" monitor



Speed Rack Adaptor on a 2 u shelf

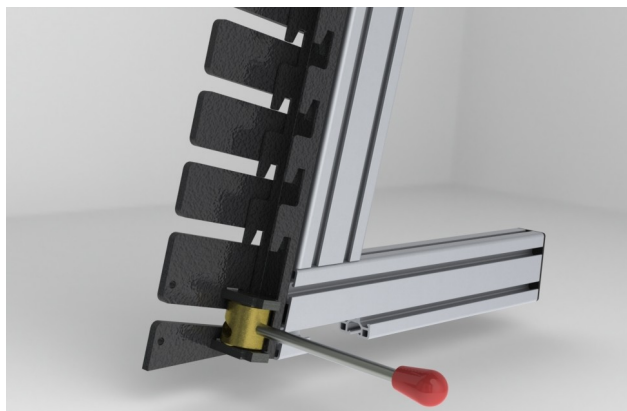


Speed Rack Adaptor with twin 24" screens



Speed Rack Adaptor on a UMD

Utilising just 1u of space, the dual dog-tooth locking system enables equipment to be quickly inserted or removed from the rack. Each piece of equipment is held in on both sides with independent dog-tooth locks, creating a failsafe system that requires two actions to unlock the equipment - preventing accidental unlocking (very important for vehicles).



Each leg has its own locking system and mounts for the longitudinal spacers. The longitudinal spacers as standard, create a distance between faces of 458 mm (8 mm wider than a standard 19" rack at 450 mm) allowing the standard 19" rack mount equipment and the Speed Rack Adaptors to fit between the legs. By increasing or decreasing the length of the longitudinal spacers, the Speed Rack frame can be adapted to accept any width of equipment. With non standard widths Mode-AL will manufacture and dispatched same day* any custom widths required. Custom brackets for other equipment can take up to 5 working days.



*Vesa and universal screen mounts only

The maximum distance between legs is 2.2 m. This allows the stack to be configured to accept large format LCD screens for multi viewers or confidence monitors.

Cable Management: Mode-AL is proud of its reputation of supplying Monitor stacks and Media Walls with cable management systems integral to the design of the Stack/Wall by working with its customers to plan the cable ways for optimum distribution. Mode-AL has again worked very hard on the cable management of the Speed Rack and has developed the "Six Finger Strain Relief System" that is incredibly simple but invaluable for reducing the likelihood of damage to expensive equipment. By looping all the cables through the 6 fingers, this provides a break between the equipment and the trailing cable, reducing the strain on the connector and the inevitable accidental disconnection or damage to the equipment. **The simplicity of the Six Finger strain relief ensures its use.**



Speed Rack is Patented

Standard 19" Rack Configuration

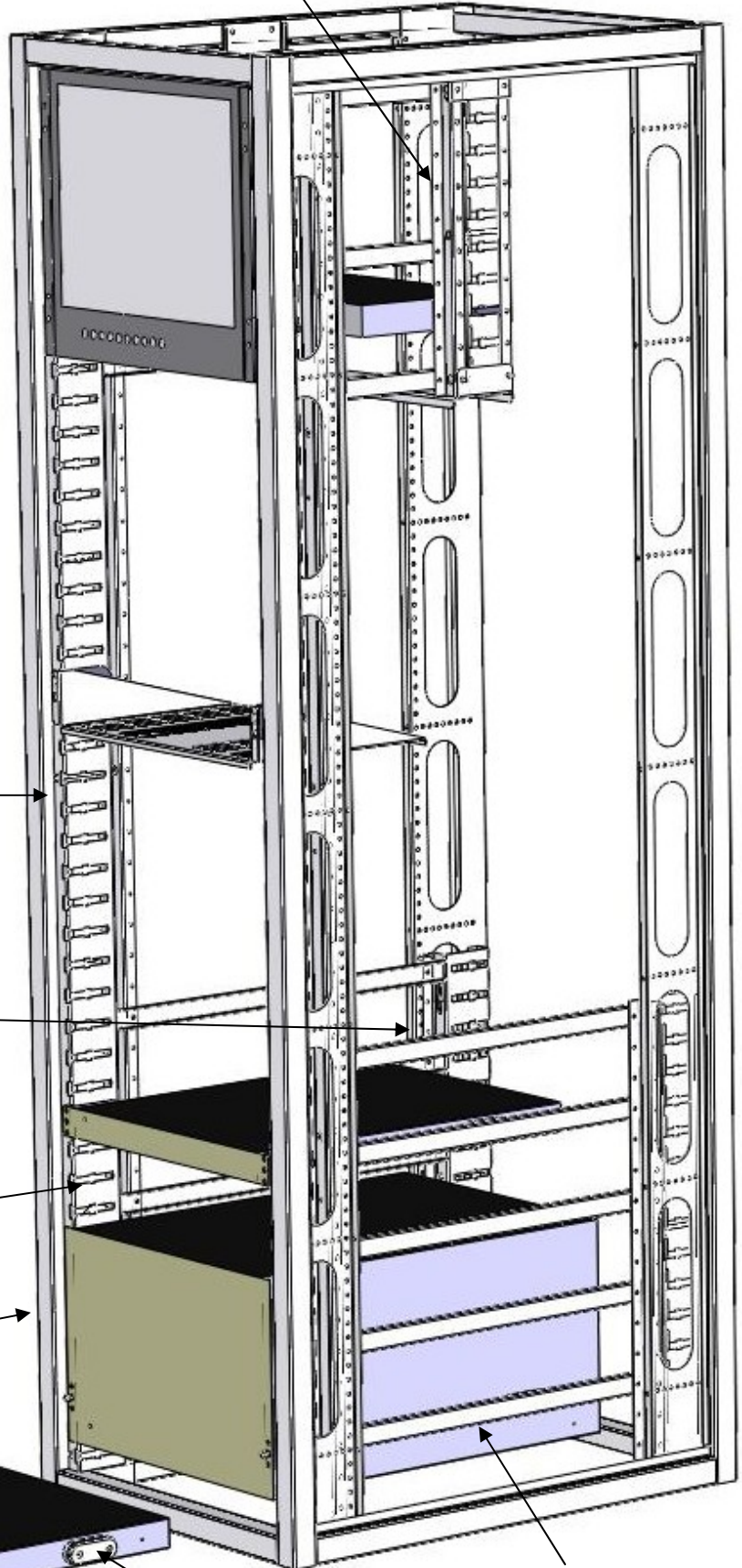
Shown here is the 19" rack variant of Speed Rack. This operates on exactly the same principle as the outside broadcast Speed Rack, but can be fitted in to any manufacturers' existing racking system at point of manufacture, or retro fitted.

With the removal of the standard 19" rack strips at the front and rear of the rack, this allows long pieces of rack equipment to be supported as the unit is slid into place with the ReSO and ReSO rail; greatly simplifying the installation and maintenance of 19" racking equipment.

With the 0u locking mechanism allowing all of the rack bays to be utilised, sub racks can be specified and located at any point and user specified rear racking provides a complete system that exceeds all existing 19" racking capabilities.

This revolutionary and first revision to the 19" racking system since its inception in the 1920-30's, significantly reduces the amount of labour time installing and maintaining 19" rack equipment. It simplifies the way all long equipment is supported, increasing the amount of access space in the rack and reducing the inventory of rack builders to 2 parts; the ReSO and ReSO rail.

Sub rack for power or Data. Can be manufactured to any size

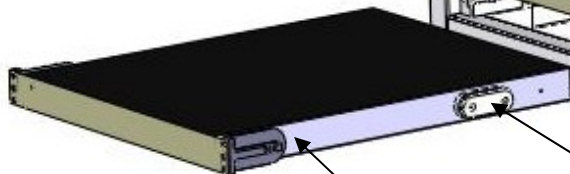


Locking mechanism integrated into rack sides ensuring 0u loss to the rack

Rear rack mounts can be full height of rack or cut down as required

Speed Rack NIRA Engagement plates

The Speed Rack system can be fitted into any existing 19" rack at point of manufacture or retro fitted



NIRA 19" rack adaptor

ReSO equipment support rail

ReSO rear of equipment support

Self Locking 19" Rack Adaptor (LIRA)

For critical applications where unlocking a whole rack of equipment at once would be unacceptable for example at sea or in the air, the LIRA variant of the Speed Rack 19" adaptor is the perfect solution.

Each 19" rack adaptor has its own built in locking system that self locks in the locked or unlocked position, activated with a 4.0 mm A/F hex key by simply depressing the screw head and rotating by 90 deg.

Each piece of equipment is securely locked into position by the LIRA 19" adaptor. Each piece of equipment has 2 locks, preventing accidental unlocking. The LIRA adaptor is 100% compatible with the standard NIRA adaptor and can fit all Speed Rack variants with the locking function disabled until it is reinserted into a LIRA compliant rack.

Please note most 19" rack equipment will need to be modified to accept the LIRA as very few pieces of equipment have the 3 standard hole positions of 19" racking. The middle hole would have to be drilled on the ears of the equipment to allow access to the locking mechanism. See fig 3.

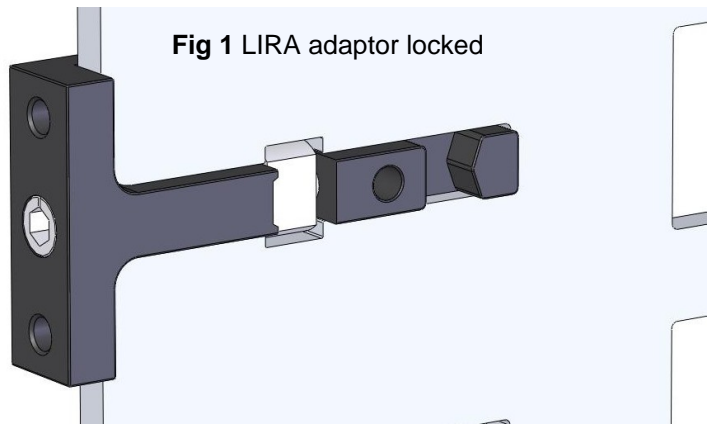


Fig 1 LIRA adaptor locked

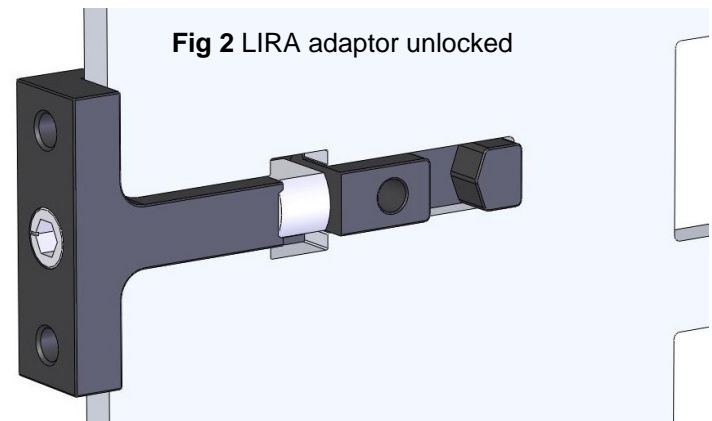


Fig 2 LIRA adaptor unlocked

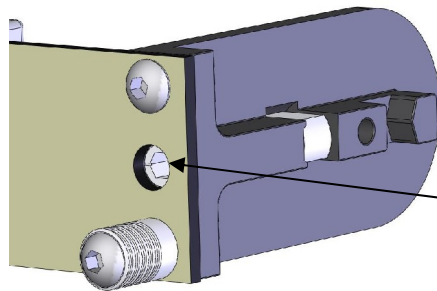
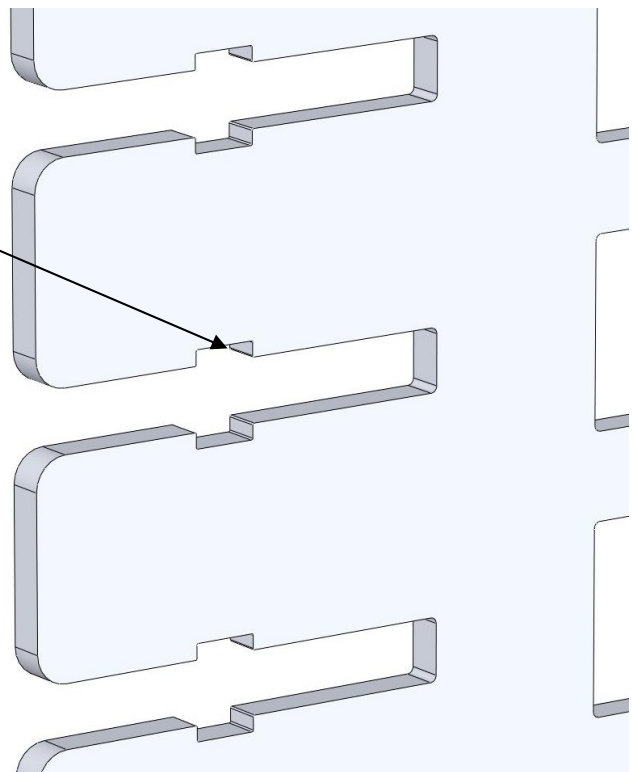
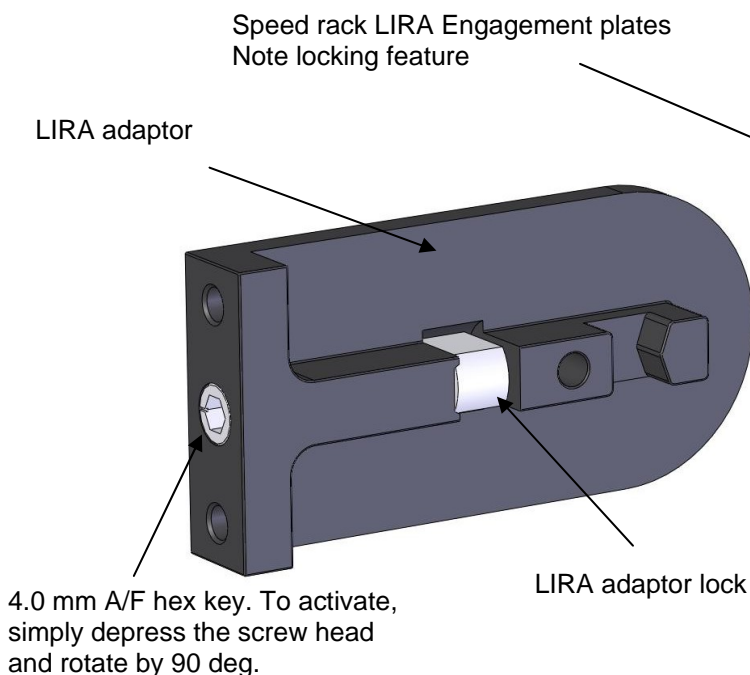


Fig 3

Modification required to standard 19" rack front plate to accept LIRA adaptor

Fig 4 LIRA adaptor removed from engagement plates

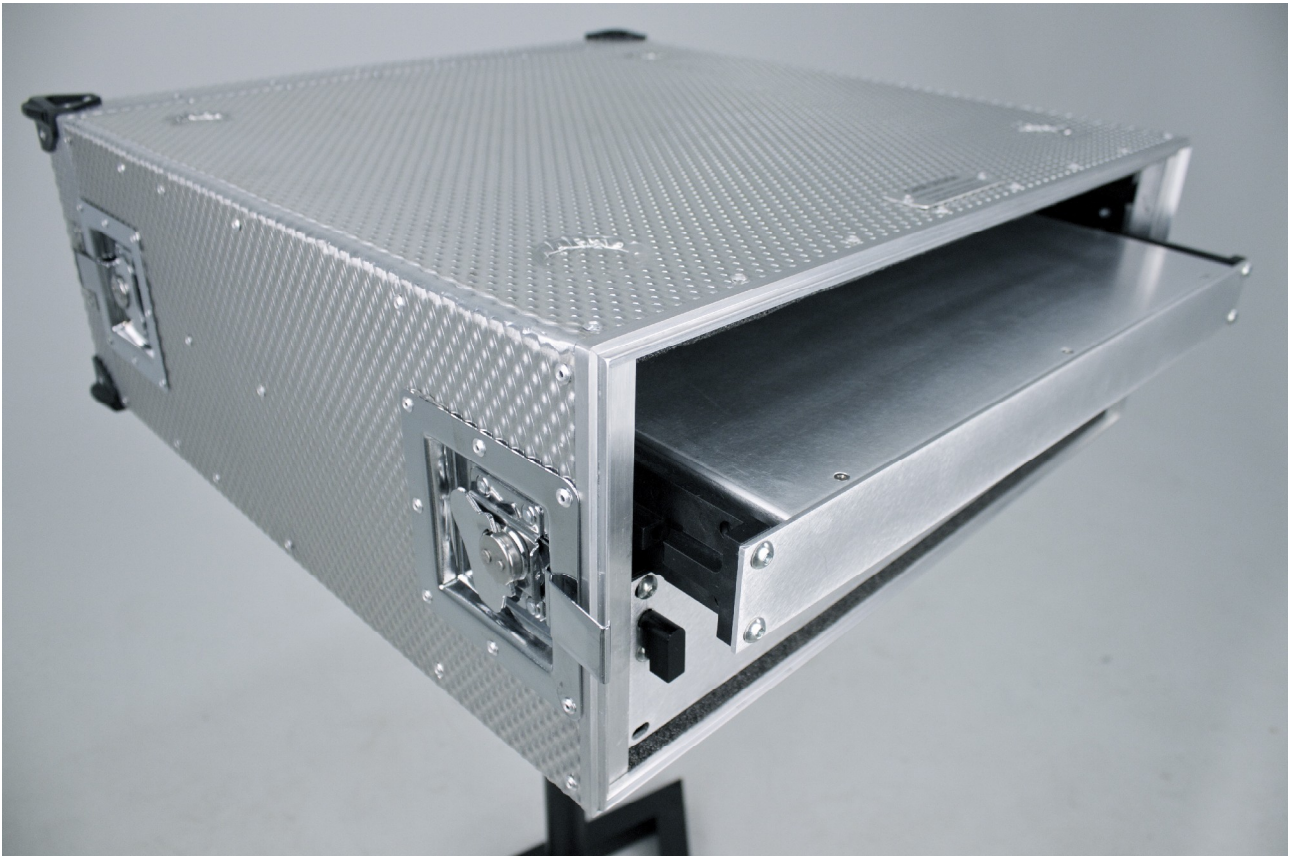
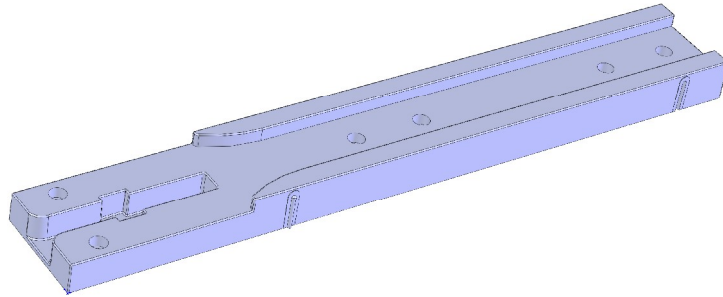


Speed Rack Flight Case

Speed Rack flight case is a simple injection moulded component that can be inserted into flight cases, Ideal for storage and transportation of any speed rack compliant equipment, allowing for secure storage and quick transfer from the flight case and into the main speed rack system.

Each injection moulded support has all the speed rack features allowing all derivatives of speed rack compliant equipment to be safely stored

With its unique interlocking side features ensuring correct vertical and front to back spacing and a single piece moulding these adaptors can be used in many locations providing a serious alternative to 19" rack strips with the added benefit tht longer equipment can have rear support as standard



Mode-AL
Integrated Furniture Solutions

Mode-AL Ltd

Unit 4 Anamax Industrial Park,
Oxford Road,
Tatling End,
Bucks, SL9 7BB
United Kingdom

Tel: +44 (0) 1753 880824
Fax: +44 (0) 870 135 9413

Web: www.mode-al.com

Email: sales-uk@mode-al.com

Mode-AL USA

150 Commerce Drive
Canton
CT 06019
USA

Tel: +1 800 306 0620
Fax: +1 860 606 9534

Email: sales-us@mode-al-usa.com